

Low Frequency AC Clamp

CP1000A(1000A/10Hz~100kHz)



Shenzhen Zhiyong Electronics Co., Ltd

For your safety

Please strictly follow the safety tips below. If you don't follow the instruction, the potential consequences could damage the machine or hurt the users. We will not be responsible for any problem caused by violating the rules

**Warning**

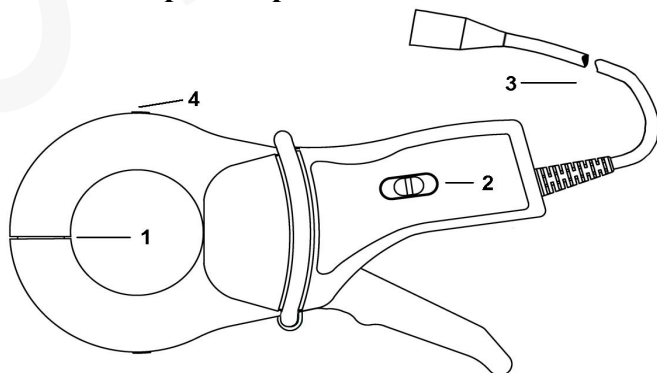
- Make sure the product is used in rated voltage and current range.
- Do not open the shell or try to connect cable during operation
- Do not use the probe in moist or combustible environment
- Make sure the device is dry and clean before using.
- If there's anything wrong with the product, please contact us immediately. Do not open the shell and try to repair the machine or worse incident could occur.

1. Summary

CP1000A current probe is used for alternating current testing. The current under test reaches effective value of 1000A, peak value of 2000A, bandwidth of 100 kHz. Clamp diameter is around 54mm. With its standard BNC output connector, CP1000A can be connected to the oscilloscope of any brand. It has three optional ranges and test small current easily. The additional optional accessories BNC to banana plug can realize the connection with digital multi-meter. CP1000A can be widely used in the testing like motor drive, inverter, power switch and avionics.

2. Product and Accessories

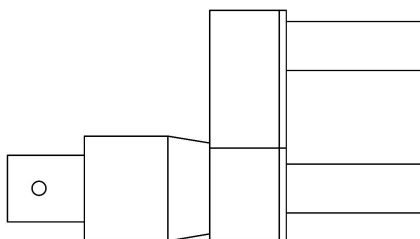
◆ Clamp description



- 1. Clamp:** used to fix the cable under test, diameter around 54mm
- 2. Range selection:** provide three ranges: 10A(100mV/A), 100A(10mV/A), 1000A(1mV/A)

3. **Output cable:** around 2m with standard BNC output port
4. **Current indication direction:** the current flow through the current direction is counted positive, otherwise it is negative.

◆ **Accessories**



Optional: BNC (female) to banana plug (male)

3. Product Specification

Range		10A	100A	1000A
Continuous Current		10Arms	100Arms	1000Arms
Peak Value Current		30Apk	300Apk	2000pk
Current Transfer Ratio		100mV/A	10mV/A	1mV/A
Bandwidth		10Hz~100kHz		
Rising time		≤3.5μs		
Accuracy	0.1A...1A	≤2%		
	1A...10A	≤1%		
	10A...100A	≤0.5%		
	100A...1000A	≤0.3%		
Relationship between position and accuracy		0.2%(Typical)		
Clamp diameter		54mm		
Output Port		BNC		
Output Cable length		2m		
Safety Level		600V CATIII		
Operating Temperature/ Humidity		-10°C~55°C,80% or less		
Storing Temperature/ Humidity		-40°C~70°C,80% or less		
Operating Altitude		2000m		
Size (Length* Width* Height)		216*115*45mm		
Weight		695g		

(* Precision: 0.1A... 10A calibration frequency is 1kHz; 10A... 1000A calibration frequency is 50Hz)

4. Operating Steps



- Connect the probe to testing equipment and set the related parameter correctly
- Connect the probe with the circuit under test and make sure the circuit is turned off before operating.
- Turn on the circuit under test and proceed with measuring
- Turn off the circuit under test before unplug the probe after testing.

5. Packing List

Packing List	
Name	Number
CP1000A	1
Instruction Manual and Warranty Card	1
Test Report	1

CYBERTEK**SHENZHEN ZHIYONG ELECTRONICS CO.,LTD**

Addr: Room A1702, Building 4,TianAn Cyber Park,HuangGe North Road,LongGang
District,ShenZhen City,China

Tel: +86-400 852 0005 / +86-755-86628000

Q Q: 400 852 0005

Email: cybertek@cybertek.cn

Url: <http://www.cybertek.cn>

©Zhiyong Electronics, 2023

Published in China, Nov. 21th, 2023